

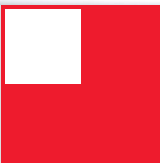
Window and Door Technology



Roto Patio Inowa

Smart hardware
for tightly sealed sliding systems

Order document
for the PVC profile system Aluplast Smart Slide in Asia-Pacific

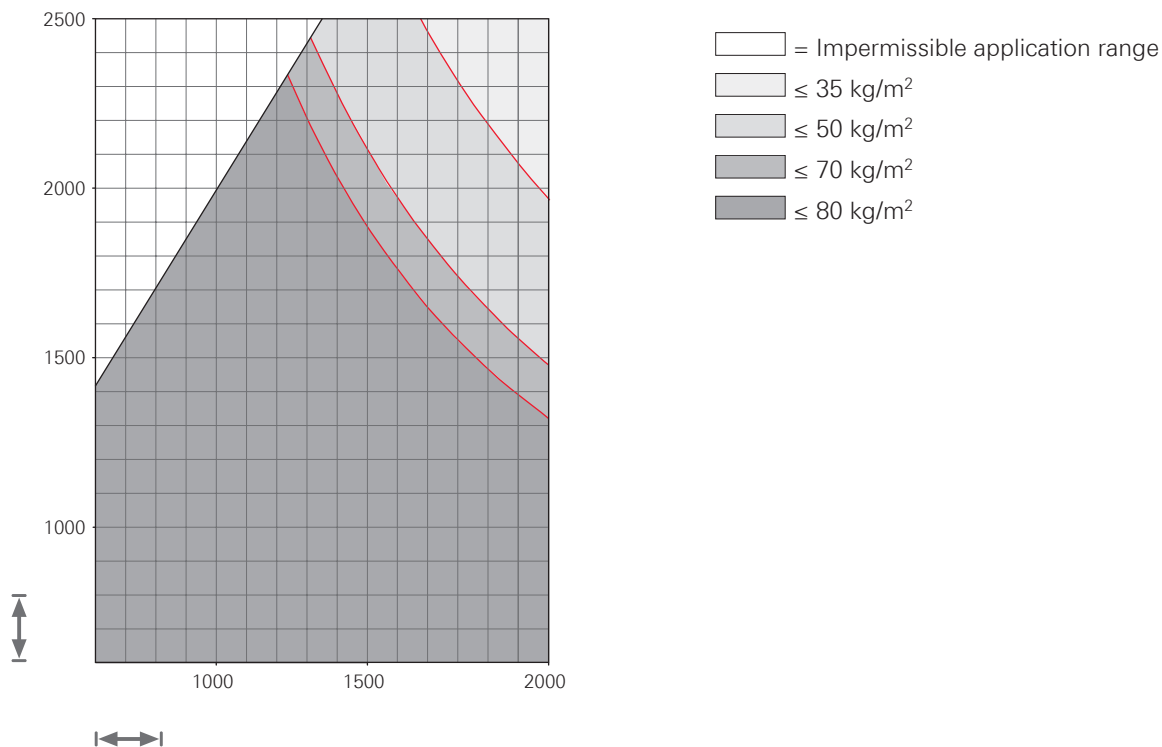


General hardware characteristics

- Sliding hardware with circumferential gasket
- Concealed hardware
- Hardware-controlled, active locking points for maximum tightness and security
- The sash runs within the frame profile with a retracting distance of 8 mm
- Comfortable automatic pulling-in of the sash into the frame for high tightness
- Simple, intuitive operation
- Slimline profile views possible
- Sash rebate width: 710 mm – 2000 mm
- Sash rebate height: 600 mm – 2500 mm
- Sash weight: max. 200 kg
- Opening diagram A / C
- Burglary resistance class: Basic security



Sliding system S.kg ≤ 200 kg



The specifications in the application diagram refer to the glass weight in kg/m².

1 mm/m² glass thickness ≈ 2.5 kg

SRH:SRW = max. 2:1

		Application range	
↔	Sash rebate width (SRW)	Control unit without soft function	710 – 2000 mm
		1 control unit with soft function	710 – 2000 mm
		2 control units with soft function	920 – 2000 mm
↑↓	Sash rebate height (SRH)		600 – 2500 mm
🏠	Sash weight (S.kg)		Max. 200 kg
–	Glass weight		Max. 80 kg/m ²

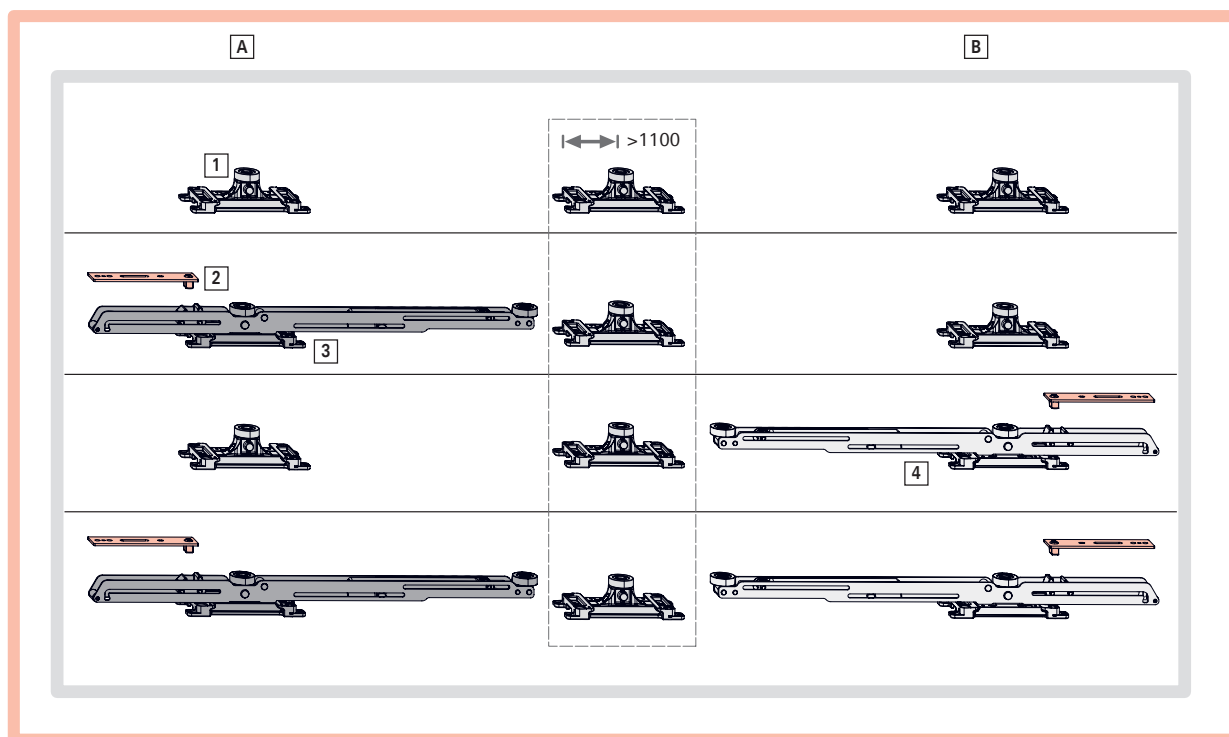


INFO

When using control units with soft function:

S.kg > 20 kg

Positioning options for the control unit



[A] On the espagnolette side

[B] On the mullion side

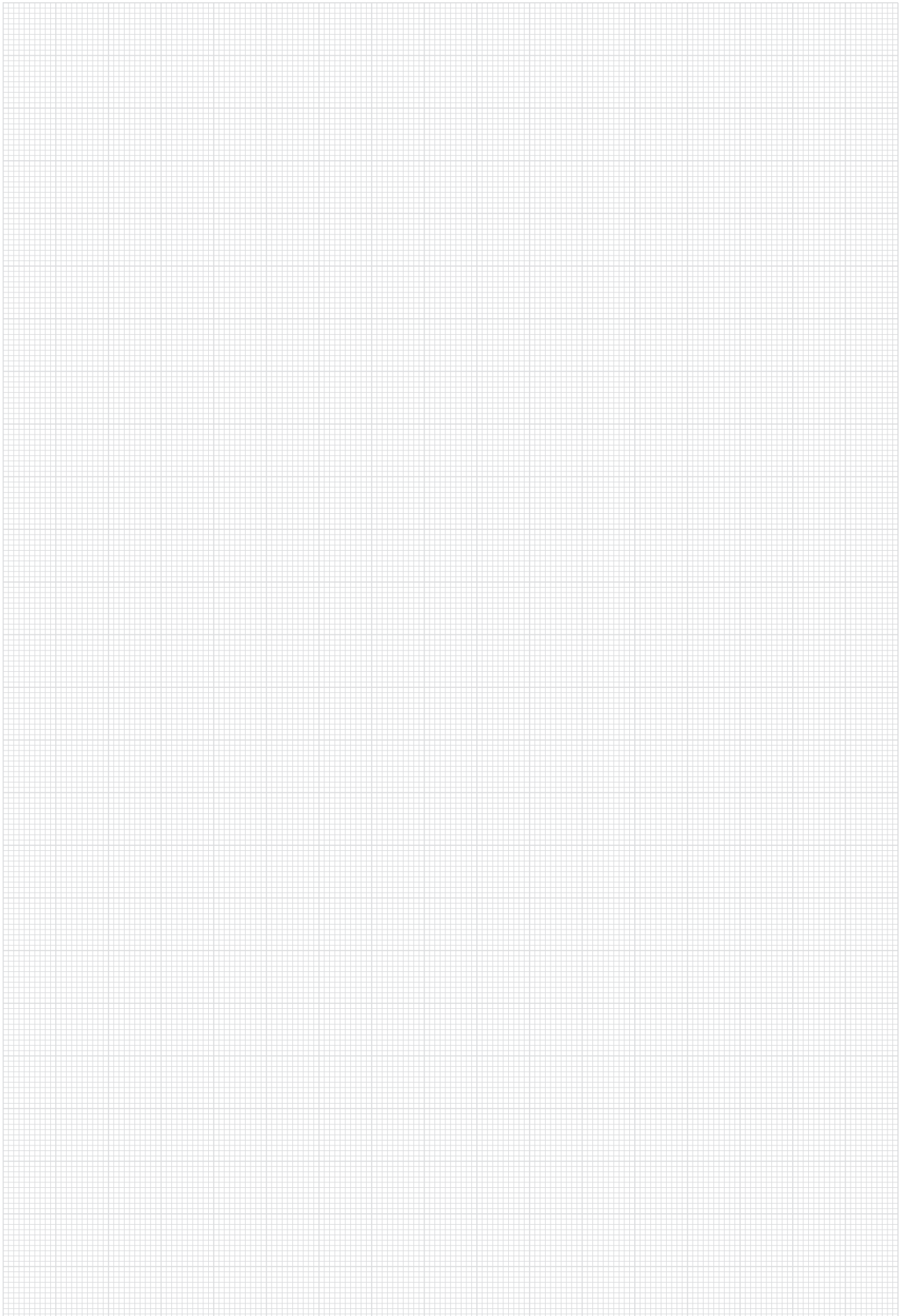
[1] Control unit without soft function

[2] Activator for control unit with soft function

[3] Control unit with SoftClose

[4] Control unit with SoftOpen

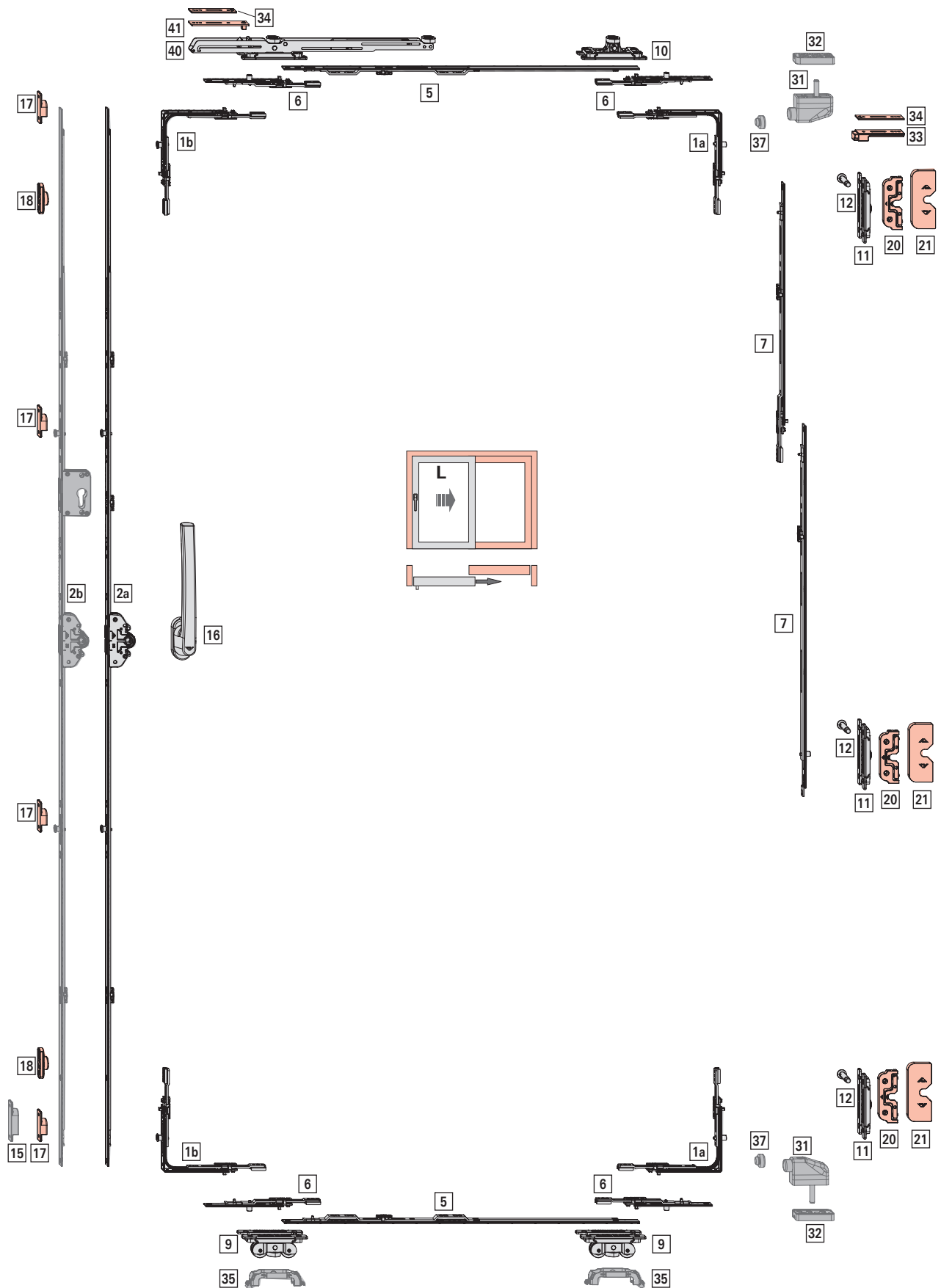
Control unit	Min. SRW	Alignment	Position	Function
Without soft function	710	–	On the espagnolette side, on the mullion side	–
	1100	–	Centred	Supports the sash from SW > 1100
With SoftClose	710 / 920	Additional control roller faces towards the centre of the sash	On the espagnolette side	Damps the movement of the sash in the locking direction and draws it slowly closed.
With SoftOpen	710 / 920	Additional control roller faces towards the centre of the sash	On the mullion side	Damps the movement of the sash in the opening direction and draws it slowly into the final position.



Hardware overview

Schema A

Hardware overview



Shown: Left-hand version; SRW 900 mm; SRH 1900 mm; DIN L



6 • Smart Slide 2023_09 •

Roto Patio Inowa

Subject to change.



Application range

Sash rebate width **SRW**710 – 2000 mm

Sash rebate height **SRH**600 – 2500 mm

Sash weight **SW** max. 200 kg

Locking components, Side of espagnolette				
Pos.	Pcs.	Description		Material no.
[17]	2-4	Striker		744579

[2a] KSR Espagnolette, 35 mm backset				
SRH	Length	HH	Cam	Material no.
600 – 800	690	263	-	799045
801 – 1000	890	413	-	798027
1001– 1200	1090	513	1V	798028
1201– 1600	1290	563	1V	798030
1601– 1800	1690	563	1V	798031
1801– 2400	1890	1000	2V	822479
2401– 2500	2290	1000	2V	822480

Centre lock component, vertical, side of espagnolette (without picture)				
SRH	Length		Cam	Material no.
1401 - 1600	200	CL 200 CON	-	765534
2001 - 2200	200	CL 200 CON	-	765534
2201 - 2400	400	CL 400 CON	-	895250
2401 – 2500	200	CL 200 CON	-	765534

Locking components, horizontal, top / bottom					
Pos.	Pcs.	Description	Size	DIN	Material no.
[1a]	2	Corner drive 1 E			640560
[1b]	2	Corner drive 1 V			640699
[9]	2-3	Bogie¹⁾	41	L	821686
	2-3		41	R	823733
[10]	2-3	Control unit²⁾	41	L	821685
	2-3		41	R	823730
[6]	4	CL 130 1 E			764350

[5] Centre lock component, horizontal, top / bottom				
SRW	Pcs.	Length	Cam	Material no.
710 – 760	2	344	-	765635
761 – 860	2	480	-	765636
861 – 1060	2	590	-	765637
1061 – 1260	2	790	1 E	765638
1261 – 1460	2	990	1 E	765639
1461 – 1660	2	1190	1 E	765640
1661 – 1910	2	1440	1 E	765641
1911 – 2000	2	1440	1 E	765641
	2	200	-	765534

Locking components, side of mullion					
Pos.	Pcs.	Description	Size	DIN	Material no.
[11]	2-4	Closer CL	41	L	821687
				R	823736
[20]	2-4	Striker mullion			793493

[7] Centre lock component, vertical, side of mullion				
SRH	Pcs.	Length	Cam	Material no.
1201 – 1800	2	600	1E	641797
1800 – 2000	1	200		765534
	1	600	1E	641797
2001 - 2200	1	400		895250
	1	600	1 E	641797
2201 - 2400	1	200	1 E	800096
	1	400		895250
	1	600	1 E	641797
2401 - 2500	1	200		765534
	1	600	1 E	641798

[12] Cam mullion			
Pcs.	Description	Length	Material no.
2-4	Cam mullion	32,8	809612

Accessories			
Pos.	Pcs.	Description	Material no.
[18]	2	Stop	635307
[37]	2	Rubber buffer	635183
[21]	2-4	Cover cap striker mullion Silver	819632
		Cover cap striker mullion Black	798979
		Cover cap striker mullion White	808054

Optional

[2b] KSR Espagnolette lockable, 35 mm backset				
SRH	Length	HH	Cam	Material no.
1800– 2400	1890	1000	2V	824778
2401 – 2500	2290	1000	2V	824779

	1	200	CL 200 CON		765534
	1	600	CL 600	1 E	641797

Pos.	Pcs.	Description	Material no.
[16]	1	Handles	→ P.12
[15]	1	Striker to prevent incorrect operation³⁾	822789

[10*] Control unit with SoftClose SRW>=710mm

Espagnolette side	41	200kg	L	837236
		200kg	R	837153

[40]	1	Control unit with SoftClose	
[41]	1	Activator for control units with soft function	

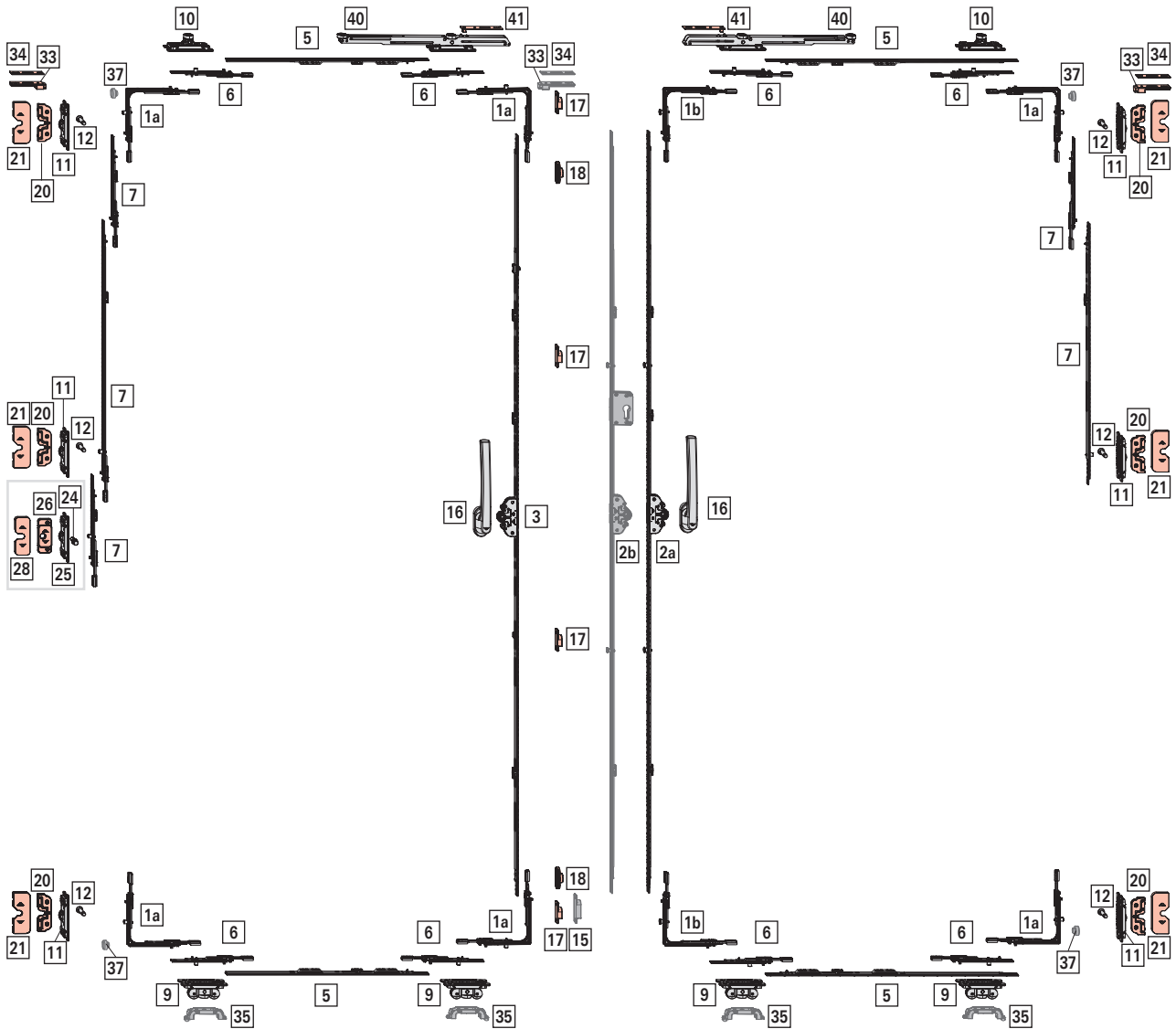
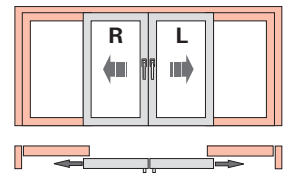
[35] Brush holder		
Pcs	Description	Material no.
2-3	Brush holder	809520

Alternative components / accessories

Pos.	Pcs.	Description	Material no.
[31]	1	End stop , depending on profile	349600
[32]	1	End stop packer , depending on profile	477263
[33]	1	Guide track stopper	800196
[34]	1	Packer stopper	800197

1) From SRW > 1061 mm third bogie necessary. No spacer blocking in the area of load transfer on top of the bogie.

2) From SRW > 1061 mm third control unit necessary.



Shown: version: first opening sash DIN L, second opening sash DIN R; SRW 900 mm; SRH 1900 mm



Hardware overview

Schema C

Application range

Sash rebate width **SRW**710– 2000 mm

Sash rebate height **SRH**600– 2500 mm

Sash weight **SW** max. 200 kg

Locking components, Side of espagnolette				
Pos.	Pcs.	Description		Material no.
[17]	4-8	Striker		744579

[2a] KSR Espagnolette, 35 mm backset				
SRH	Length	HH	Cam	Material no.
600 – 800	690	263	-	799045
801 – 1000	890	413	-	798027
1001– 1200	1090	513	1V	798028
1201– 1600	1290	563	1V	798030
1601– 1800	1690	563	1V	798031
1800– 2400	1890	1000	2V	822479
2401– 2500	2290	1000	2V	822480

[3] KSR Espagnolette, second opening sash, 35 mm backset				
SRH	Length	HH	Cam	Material no.
600 – 800	690	263	-	799045
801 – 1000	890	413	-	798027
1001– 1200	1090	513	-	809658
1201– 1600	1290	563	-	809662
1601– 1800	1690	563	-	809668
1801– 2400	1890	1000	-	809669
2401– 2500	2290	1000	-	809653

Centre lock component, vertical, side of espagnolette (without picture)				
SRH	Length		Cam	Material no.
1401 - 1600	200	CL 200 CON	-	765534
2001 - 2200	200	CL 200 CON	-	765534
2201 - 2400	400	CL 400 CON	-	895250
2401 – 2500	200	CL 200 CON	-	765534

Locking components, horizontal, top / bottom					
Pos.	Pcs.	Description	Size	DIN	Material no.
[1a]	6	Corner drive 1 E			640560
[1b]	2	Corner drive 1 V			640699
[9]	4-6	Bogie¹⁾	41	L	821686
	4-6		41	R	823733
[10]	4-6	Control unit²⁾	41	L	821685
	4-6		41	R	823730
[6]	8	CL 130 1 E			764350

[5] Centre lock component, horizontal, top / bottom					
SRW	Pcs.	Length	Cam		Material no.
710 – 760	2	344	-		765635
761 – 860	2	480	-		765636
861 – 1060	4	590	-		765637
1061 – 1260	4	790	1 E		765638
1261 – 1460	4	990	1 E		765639
1461 – 1660	4	1190	1 E		765640
1661 – 1910	4	1440	1 E		765641
1911 – 2000	4	1440	1 E		765641
	4	200	-		765534

Locking components, side of mullion					
Pos.	Pcs.	Description	Size	DIN	Material no.
[11]	3-7	Closer CL	41	L	821687
				R	823736
[20]	4-8	Striker mullion			793493
[25]	1	Center closer for anti-pushback function	41	L	821687
				R	823736
[26]	1	Striker for anti-pushback			810279

[7] Centre lock component, vertical, side of mullion					
SRH	Pcs.	Length		Cam	Material no.
1201 – 1800	2	600	CL 600	1 E	641797
1800 – 2000	1	200	CL 200 CON		765534
	1	600	CL 600	1 E	641797
2001 - 2200	1	400	CL 400 CON		895250
	1	600	CL 600	1 E	641797
2201 - 2400	1	200	CL 200 CON	1 E	800096
	1	400	CL 400 CON		895250
	1	600	CL 600	1 E	641797
2401 - 2500	1	200	CL 200 CON		765534
	1	600	CL 600 CON	1 E	641798
	1	200	CL 200 CON		765534
	1	600	CL 600	1 E	641797

[7] Centre lock component, passive sash					
SRH	Pcs.	Length		Cam	Material no.
600 – 1200	1	200	CL 200 CON	1 E	800096
1201 – 1800	1	600	CL 600 CON	1 E	641798
		200	CL 200 CON	1 E	800096
1801 - 2000	1	200	CL 200 CON		765534
	1	400	CL 400 CON		895250
	1	200	CL 200 CON	1 E	800096
2001 - 2200	1	400	CL 400 CON		895250
	1	600	CL 600 CON	1 E	641798
	1	200	CL 200 CON	1 E	800096
2201 - 2400	1	200	CL 200 CON	1 E	800096
	1	400	CL 400 CON		895250
	1	600	CL 600 CON	1 E	641798
	1	200	CL 200 CON	1 E	800096
2401 - 2500	1	200	CL 200 CON		765534
	1	600	CL 600 CON	1 E	641798
	1	200	CL 200 CON		765534
	1	600	CL 600 CON	1 E	641798
	1	200	CL 200 CON	1 E	800096

[12] Cam mullion			
Pcs.	Description	Length	Material no.
4-8	Cam mullion	32,8	809612

[24] Pin for anti-pushback function			
Pcs.	Description	Length	Material no.
1	Pin for anti-pushback function	34mm	822393

Handles			
Pos.	Pcs.	Description	Material no.
[16]	2	Handles	→ P.12

Accessories			
Pos.	Pcs.	Description	Material no.
[18]	2	Stop	635307
[37]	4	Rubber buffer	635183
[21]	4-8	Cover cap striker mullion Silver	819632
		Cover cap striker mullion Black	798979
		Cover cap striker mullion White	808054
[28]	1	Cover cap anti-pushback Silver	828482
		Cover cap anti-pushback Black	809717
		Cover cap anti-pushback White	819351

Optional**[2b] KSR Espagnolette lockable, 35 mm backset**

SRH	Length	HH	Cam	Material no.
1801 – 2330	1890	1000	2V	824778
2331 – 2500	2290	1000	2V	824779

[15]	2	Striker to prevent incorrect operation³⁾	822789
------	---	--	---------------

**[10*] Control unit with SoftClose
SRW >= 710 mm**

Espagnolette side	41	200kg L	837236
		200kg R	837153

[40] 2 Control unit with SoftClose

[41] 2 Activator for control units with soft function

[35] Brush holder

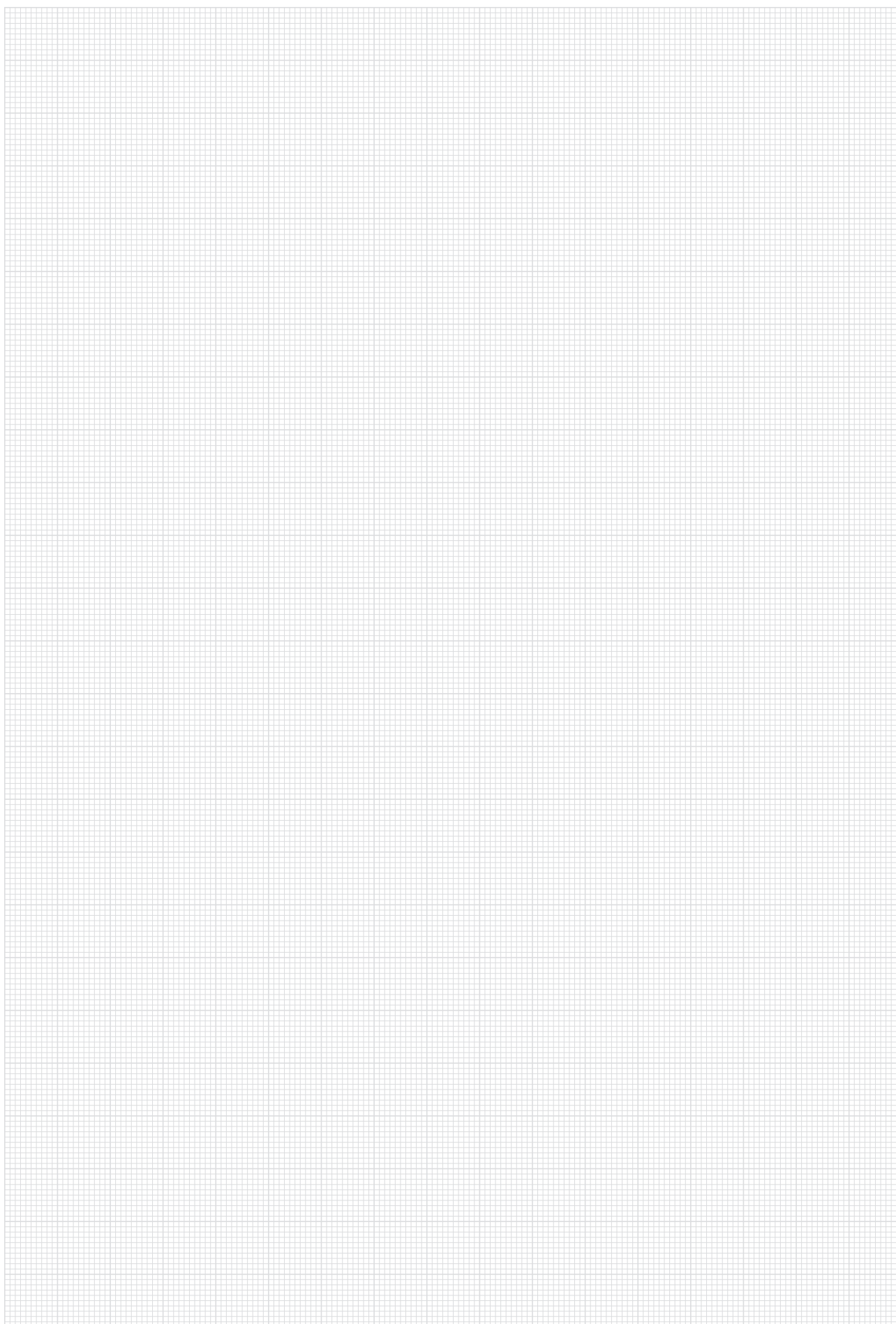
Pcs	Description	Material no.
4-6	Brush holder	809520

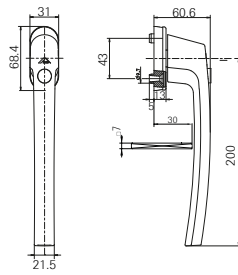
Alternative components / accessories

Pos.	Pcs.	Description	Material no.
[31]	3	End stop , depending on profile	349600
[32]	3	End stop packer , depending on profile	477263
[33]	3	Guide track stopper	800196
[34]	3	Packer stopper	800197

1) From SRW > 1061 mm third bogie necessary. No spacer blocking in the area of load transfer on top of the bogie.

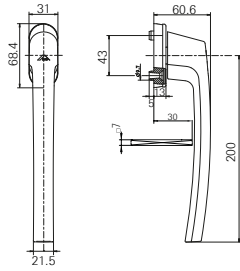
2) From SRW > 1061 mm third control unit necessary.





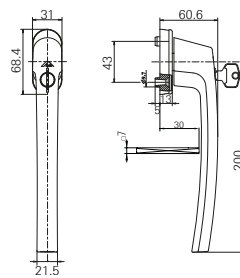
Patio handle with push button 180° lock-in position

Color	Spindle	SAP no.
White	without spindle	2005069
Black	whitout spindle	2005056
Silver	without spindle	2005057
Brown	whitout spindle	2005058



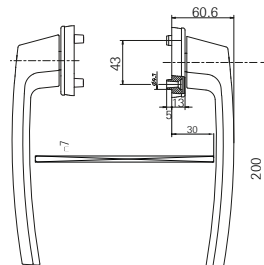
Patio handle 180° lock-in position

Color	Spindle	SAP no.
White	without spindle	894767
Black	whitout spindle	894768
Silver	without spindle	894769
Brown	whitout spindle	894780



Patio handle with lock 180° lock-in position

Color	Spindle	SAP no.
White	without spindle	2005094
Black	whitout spindle	2005095
Silver	without spindle	2005096
Brown	whitout spindle	2005097

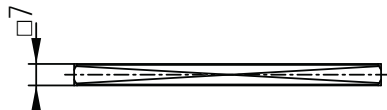


Patio handle 180° lock-in position

Color	Spindle	SAP no.
White	without spindle	894767
Black	whitout spindle	894768
Silver	without spindle	894769
Brown	whitout spindle	894780

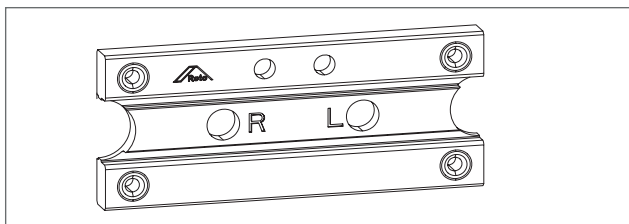
Patio handle 180° lock-in position Outside

Color	Spindle	SAP no.
White	without spindle	894782
Black	whitout spindle	894783
Silver	without spindle	894784
Brown	whitout spindle	894785



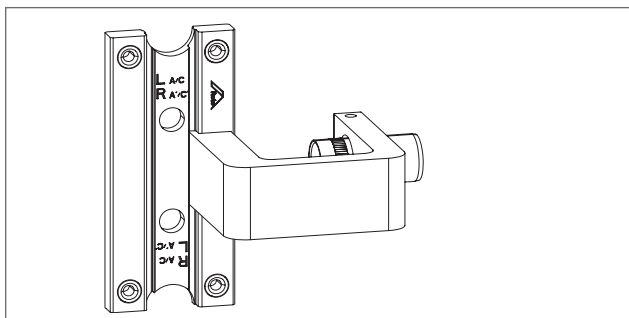
Spindle 7x7

Length	SAP no.
80mm	737985
150mm	737986



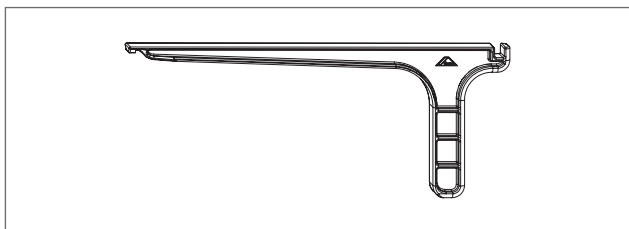
Drilling jig bogie / control unit

Description	Material no.
Drilling jig bogie / control unit	DIN L/R 836947



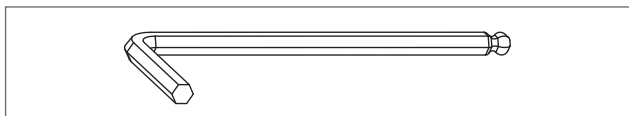
Drilling jig closer CL

Description	Material no.
Drilling jig closer CL	DIN L/R 836942



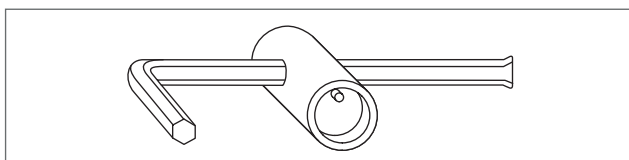
Tensioning tool for softclose

837763



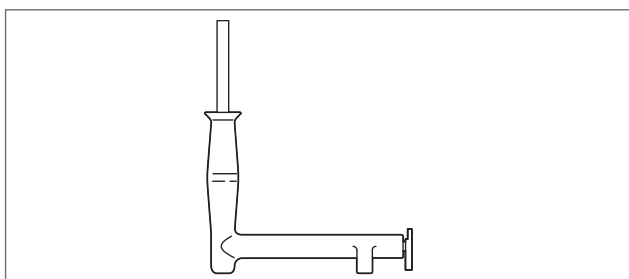
2.5 mm Allen key

230764



Adjustment key V cam

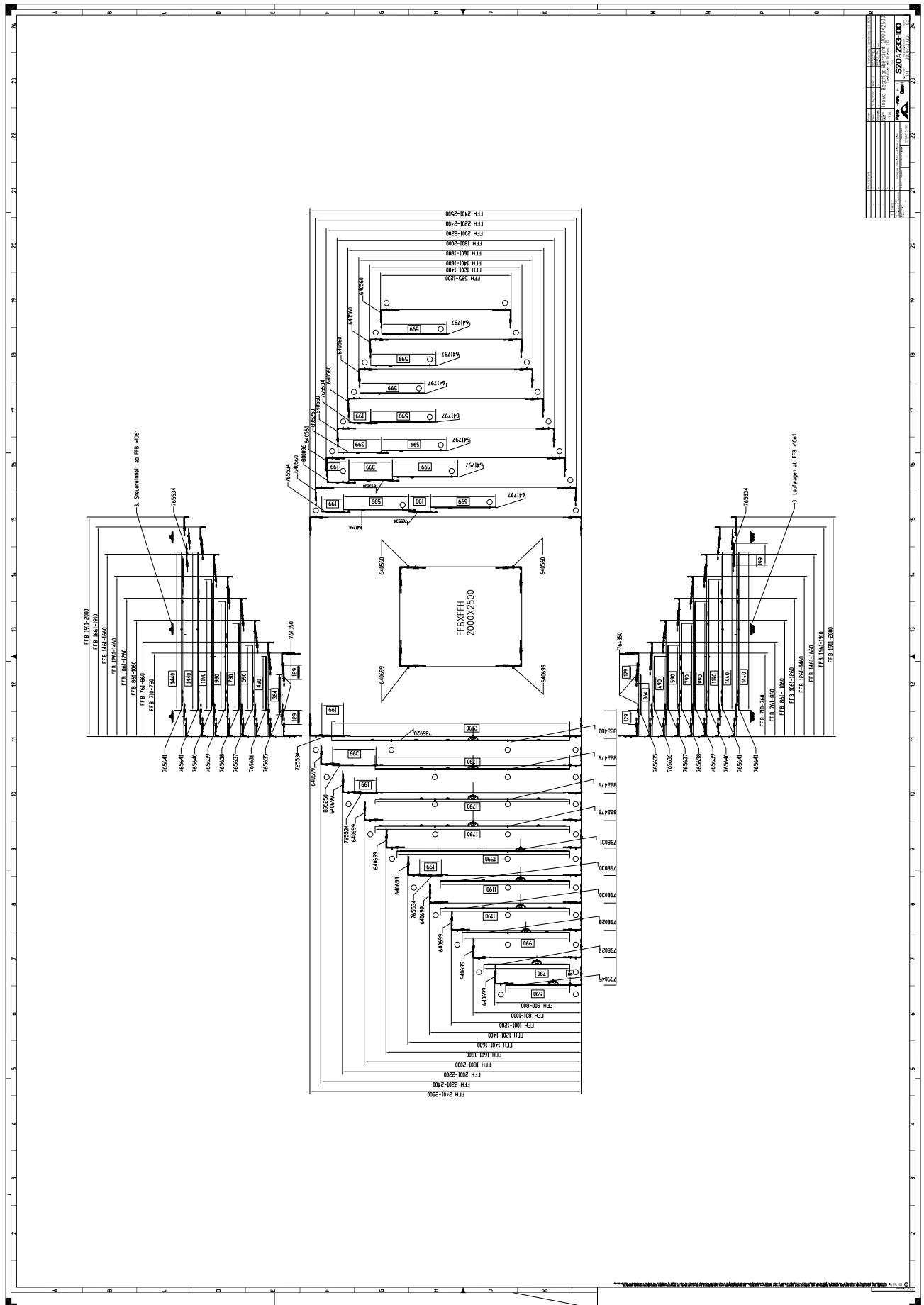
258191



Extractor handle

740068

Diagram A K





**Global Headquarter
Roto Frank
Fenster- und Türtechnologie GmbH**

Wilhelm-Frank-Platz 1
70771 Leinfelden-Echterdingen
Germany

Phone +49 (0) 711 7598 0
Fax +49 (0) 711 7598 253
info@roto-frank.com

www.roto-frank.com

**Asia-Pacific Regional Headquarter
Roto Frank
Asia-Pacific Pte. Ltd.**

19 Joo Koon Road
628918 Singapore
Singapore

Phone +65 6662 9240
Fax +65 67953738
info@roto-frank.com.sg

From a single source: Optimum hardware systems to meet all challenges

- Roto Tilt&Turn** | The Tilt&Turn hardware system for windows and balcony doors
- Roto Sliding** | Hardware systems for large sliding windows and doors
- Roto Door** | Matching hardware technology everything about doors
- Roto Equipment** | Additional technology for windows and doors